

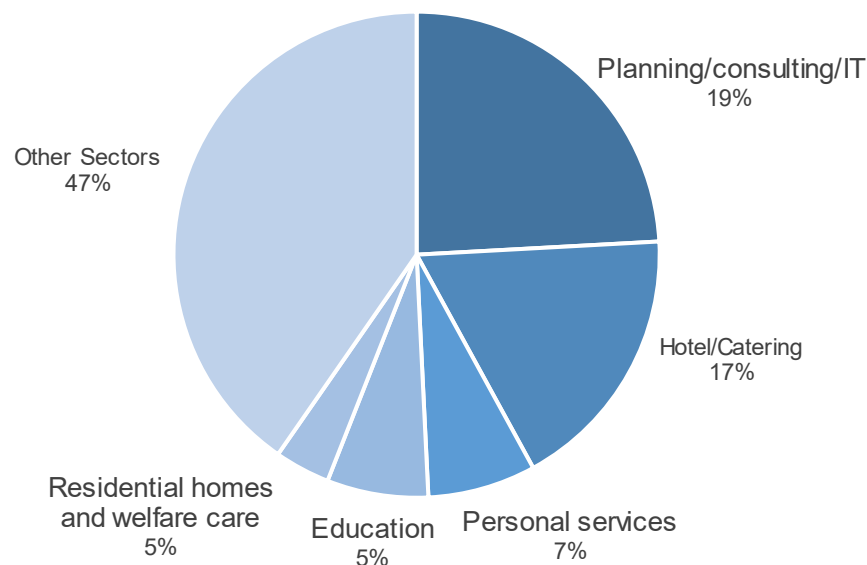


Weekly statistics:

Persons with Protection Status 'S' in employment¹

	Week 47	Week 48	Diff.
Persons with Protection Status 'S'	71363	71435	+0.1%
Persons in gainful employment	16723	16793	+0.4%
Percentage of persons in employment ²	23.43%	23.51%	+0.3%
Working-age population (18-64)	44486	44556	+0.2%
Persons in employment (18-64)	15977	16050	+0.5%
Percentage of working-age population in employment	35.91%	36.02%	+0.3%

Figure 1: Persons with Protection Status 'S' in gainful employment – key sectors³



Source: ZEMIS database – status on 09.12.2025⁴

The evaluation is based on the entries made by the competent cantonal authorities in ZEMIS regarding the start and end of gainful employment. In order to take up gainful employment, the employer or self-employed person must report the employment to the competent cantonal authority.⁵

¹ A more accurate methodology has been used since February 2025. This may result in slight variations compared to the previous figures.

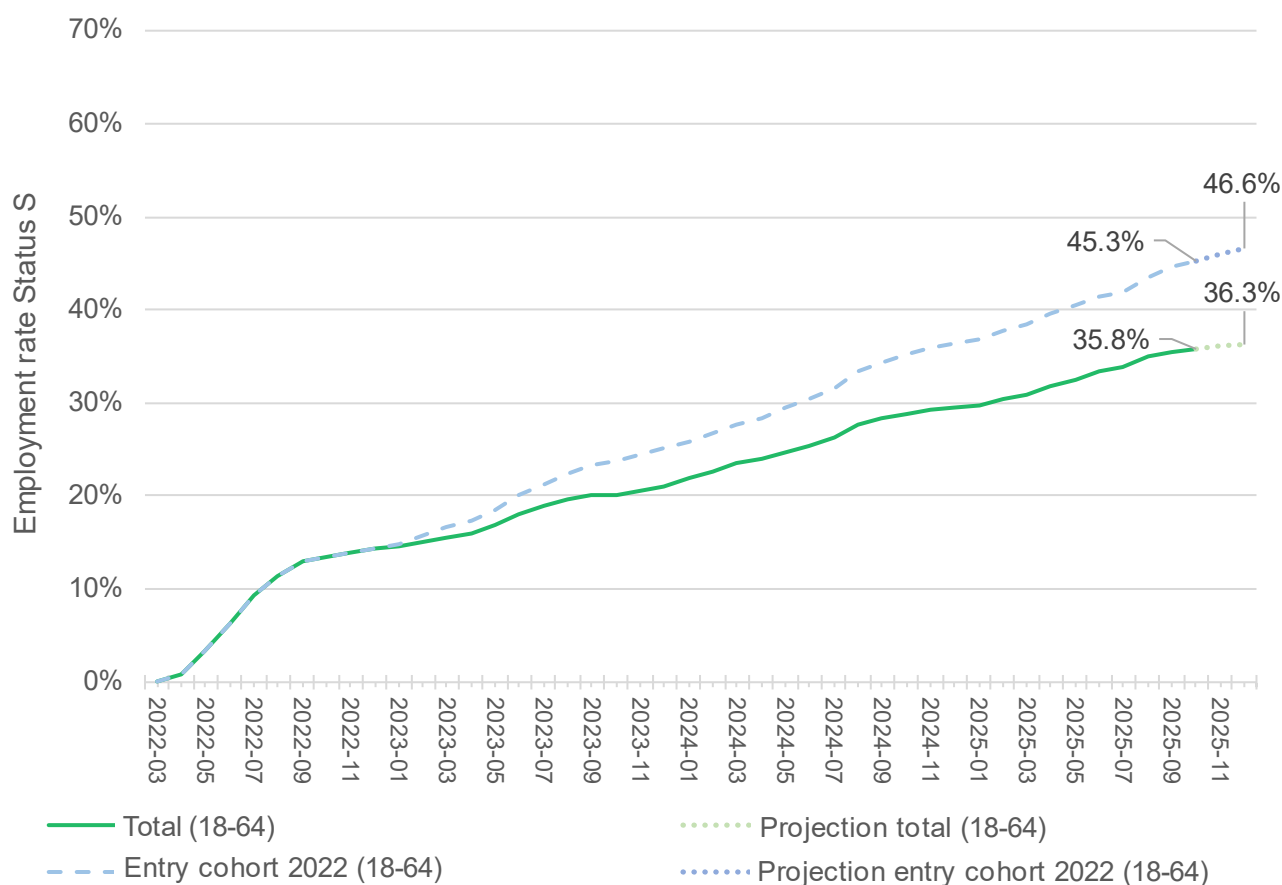
² This percentage does not indicate the rate of employment, but merely the proportion of persons with Protection Status 'S' who were in gainful employment on the date of reporting (all ages).

³ Only the proportionally first five sectors are shown.

⁴ These are daily figures, which may deviate slightly from the historicised data at the end of the month.

⁵ Since October 23, 2025, employment can be reported via the online portal for businesses, "EasyGov.swiss."

Figure 2: Development of the employment rate (18-64) and forecast until the end of 2025⁶



Source: Asylum statistics (as of October 31, 2025) (Statistical Service)

On May 28, 2025, the Federal Council set a target of 50 percent employment for persons with S protection status who have been living in Switzerland for at least three years by the end of 2025. A time series forecast model can be used to calculate the employment rate at the end of 2025. The employment rate among those seeking protection who have been in Switzerland since 2022 is comparatively higher than in the overall population of people seeking protection. The group of people who have been in Switzerland for over two years accounts for a good two-thirds (70%) of the total population.

⁶ The forecasts are based on a model of the time series of monthly employment rate assessments since March 2022 and are updated once a month.