

METAS VNA Tools II

Michael Wollensack

November 2011

Contents

1	Installation	3
1.1	System Requirements	3
1.2	Steps	3
2	Overview	4
2.1	Navigation Bar	4
2.1.1	Options	5
2.2	Tabular Control	5
3	Data Explorer	6
3.1	Filetypes	6
3.2	File Explorer	6
3.3	Visualization	7
3.3.1	Graph	7
3.3.2	Table	9
3.3.3	Point	10
3.3.4	Info	11
3.4	Math	12
3.5	Uncertainty	13
4	Database	14
4.1	Cable	14
4.2	Calibration Standard	15
4.2.1	Agilent Model Standard	16
4.2.2	Databased Standard	17
4.3	Connector	17
4.4	VNA Device	18
5	Measurement Journal	22
5.1	VNA Settings	23
5.2	Cable Movement	25
5.3	Custom Cable Settings	25
5.4	New Connection	26

5.5	Custom Connector Settings	27
5.6	Measurement	28
5.7	Experiment	29
5.8	User Comment	29
6	Calibration Config	31
6.1	Optimization Parameters	33
7	Error Correction	34
8	Sliding Load	35
9	Tools	37
9.1	Math	37
9.2	Cascade	37
9.3	Index	38
9.4	Data Set	38
9.5	Merge	38
9.6	Change Zr	38
9.7	Interpolation	38
9.8	Agilent Uncertainty Calculator	38
10	Script	39
11	Agilent Model Fit	40
A	File Tpyes	41
B	Naming Convention	42
C	Further Reading	45

1 Installation

1.1 System Requirements

The following list describes the minimum software and hardware requirements of METAS VNA Tools II.

- Microsoft Windows XP
- Microsoft .NET Framework 2.0
- Microsoft Windows Installer 3.1
- National Instruments VISA 5.0.3
- At least 512 megabytes (MB) of RAM (1024 MB is recommended)
- At least 4 megabytes (MB) of available space on the hard disk
- Video adapter and monitor with SVGA (800 x 600) or higher resolution (1280 x 1024 is recommended)

1.2 Steps

The following steps describe the installation of METAS VNA Tools II.

1. Double-click on the METAS VNA Tools II setup program
2. Accept license agreement
3. Select installation folder
4. Confirm installation
5. Installation complete

After the installation, one can start METAS VNA Tools II by double-clicking on its desktop shortcut.

2 Overview

METAS VNA Tools II is a software which is designed to compute uncertainties of S-parameter measurements:

- It uses a VNA measurement model for N -port Vector Network Analyzers.
- It supports the following calibration types: One Port, SOLT, GSOLT, QSOLT, Unknown Thru, TRL, and Optimization.
- It allows the definition of all influences that affect VNA measurements.
- It uses the Linear Propagation module of Metas.UncLib to propagate all uncertainties through the VNA measurement model.
- It can visualize S-parameter data with uncertainties.

The graphical user interface is split up into two parts, see Figure 1. The navigation bar is in the upper part of the screen and below is the tabular control.

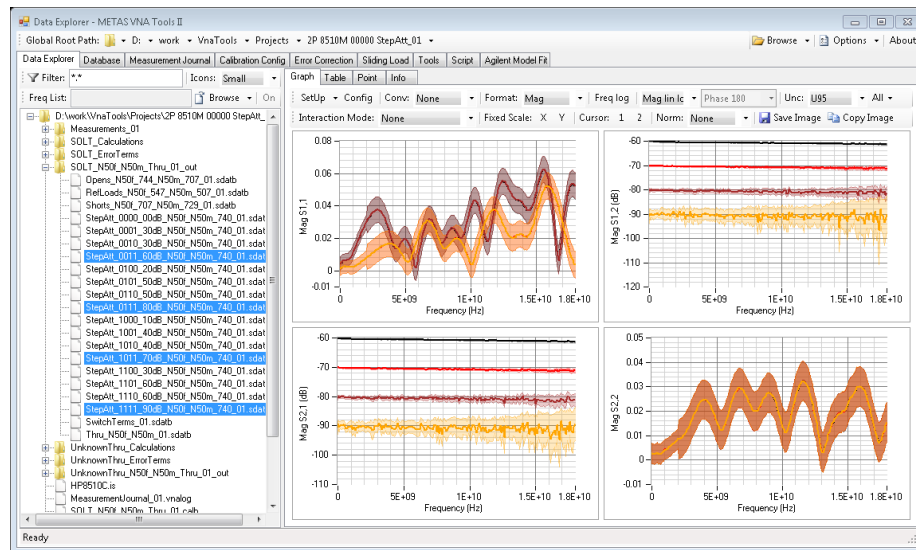


Figure 1: METAS VNA Tools II

2.1 Navigation Bar

The following user controls are available in the navigation bar:

Global Root Path sets the root directory for all tabular pages.

Browse selects a root directory.

Options sets the METAS VNA Tools II options.

Create Screenshots creates screen shots of all tabular pages.

About shows the about box.

2.1.1 Options

The options dialog can be used to configure the options of METAS VNA Tools II, see Figure 2. The following user controls are available:

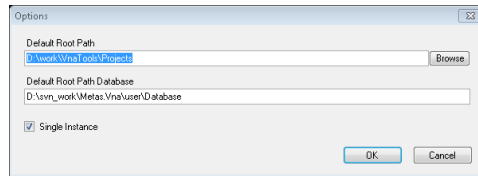


Figure 2: METAS VNA Tools II / Options

Default Root Path sets the root directory.

Default Root Path Database sets the root directory for the database.

Single Instance limits the METAS VNA Tools II application to one instance.

2.2 Tabular Control

The following tabular pages are available:

Data Explorer is designed to visualize S-parameter files.

Database specifies values and uncertainties of cables, calibration standards, connectors and VNA devices.

Measurement Journal is used to collect measurement data and to protocol the measurement process.

Calibration Config configures a VNA calibration and computes the error terms.

Error Correction configures and computes the error correction of raw measurement data.

Sliding Load configures and computes the circle fit of a sliding load.

Tools provides some tools for post processing of data.

Script provides a built-in Iron Python script engine.

Agilent Model Fit computes the Agilent model parameters for a calibration standard.

3 Data Explorer

The Data Explorer tabular page is designed to visualize S-parameter files. The graphical user interface is split up into two parts. The file explorer is on the left and the visualization with different tabs is on the right.

3.1 Filetypes

Table 1 shows the supported file types. S-Parameter Data files can only contain

Table 1: File types

Description	Extension
S-Parameter Data Binary	(.sdatb)
S-Parameter Data Touchstone	(.*p)
S-Parameter Data Xml	(.sdatx)
VNA Data Binary	(.vdatb)
VNA Data CITI	(.cti;.citi)
VNA Data Xml	(.vdatx)

S-parameter data. In contrast VNA Data files can contain receiver values and ratios of receiver values.

3.2 File Explorer

The following user controls are available:

Filter sets file filter (default: *.*).

Icons sets icon size (default: Small).

Freq List Browse can be used to select a frequency list file. All selected files in the tree view will be interpolated (default: None).

Freq List On turns frequency list interpolation on or off (default: Off).

Tree View can be used to select one or multiple files. Additional files can be selected while holding the CTRL or SHIFT key.

3.3 Visualization

The Data Explorer supports different view modes:

Graph shows a graphical visualization of multiple files.

Table shows a tabular visualization of a single file.

Point shows an uncertainty budget for one frequency point and one parameter of a single file.

Info shows file information including MD5 checksum of multiple files.

3.3.1 Graph

The graph tab supports multiple selected files, see Figure 3. The following user

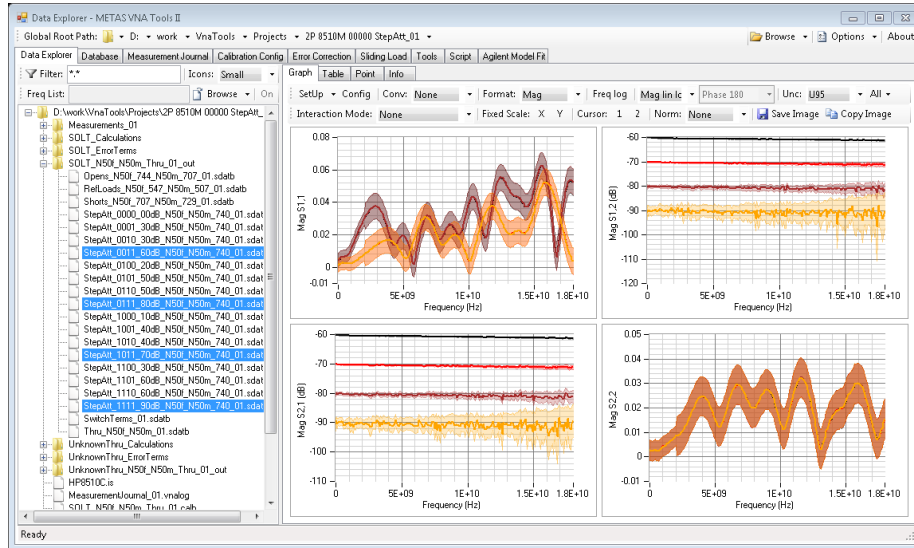


Figure 3: Data Explorer / Graph

controls are available:

Setup sets up the plots (default: $S_{x,x}$ 2-Ports).

Config selects the parameter for each subplot. The parameter can be an S-parameter, a receiver value or a user defined receiver ratio. Where **a** is the reference receiver and **b** is the test receiver.

Conv sets the conversion to None, S/S', Impedance, Admittance, VSWR or Time Domain (default: None).

Format sets the data format to Real Imag, Mag Phase, Real, Imag, Mag or Phase (default: Mag Phase).

Freq log sets the frequency axis to linear or logarithmic (default: Freq lin).

Mag format sets the magnitude format to Mag lin (reflection and transmission linear), Mag log (reflection and transmission logarithmic) or Mag lin log (reflection linear and transmission logarithmic) (default: Mag lin).

Phase format sets the phase format to Phase 180, Phase 360, Phase Unwrap, Phase Delay or Group Delay (default: Phase 180).

Unc sets the uncertainty mode to None, Standard or U95 (default: None).

Interaction Mode sets interaction mode to None, Zoom or Pan (default: None).

Fixed Scale activates or deactivates automatically scaling of the x- and y-axis.

Cursor shows or hides one or two cursors.


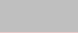





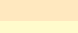

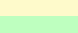
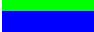
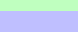

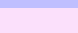



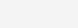


Norm normalizes all traces to one selected trace or to the mean value of all traces (default: None).

Save Image saves the current plots to a bitmap file. Supported file formats are BMP, JPG and PNG.

Copy Image copies the current plots to the clipboard.

Table 2 shows the different colors for each trace and its associated uncertainty region.

Table 2: Trace Colors

Trace	Value	Unc	Color
1			black
2			brown
3			red
4			orange
5			yellow
6			green
7			blue
8			violet
9			gray
10			light gray

3.3.2 Table

The first of the selected files will be shown in the table view, see Figure 4. The

Frequency (MHz)	S11 Mag	S11 U(Mag)	S11 Phase (°)	S11 U(Phase) (°)	S21 Mag (dB)	S21 U(Mag) (dB)	S21 Phase (°)
16100.000	0.047	0.008	-108.921	9.787	-61.167	0.196	-
16200.000	0.042	0.008	-119.496	11.136	-61.177	0.196	-1
16300.000	0.035	0.008	-129.112	13.368	-61.212	0.194	-1
16400.000	0.028	0.008	-137.500	16.830	-61.204	0.195	-1
16500.000	0.020	0.008	-143.480	23.733	-61.217	0.214	-1
16600.000	0.012	0.008	-141.306	38.374	-61.194	0.195	1
16700.000	0.007	0.008	-106.094	70.753	-61.168	0.214	1
16800.000	0.010	0.008	-55.628	47.892	-61.246	0.217	1
16900.000	0.017	0.008	-47.253	27.370	-61.234	0.216	-
17000.000	0.024	0.008	-51.261	19.067	-61.230	0.217	-
17100.000	0.031	0.008	-58.742	14.813	-61.195	0.217	-
17200.000	0.037	0.008	-68.471	12.488	-61.311	0.220	-
17300.000	0.042	0.008	-78.773	10.917	-61.237	0.218	-
17400.000	0.047	0.008	-90.145	9.957	-61.189	0.219	-
17500.000	0.050	0.008	-101.957	9.338	-61.212	0.217	-
17600.000	0.052	0.008	-114.172	8.895	-61.204	0.218	-
17700.000	0.053	0.008	-126.619	8.726	-61.327	0.219	-
17800.000	0.054	0.008	-140.178	8.607	-61.299	0.218	-1
17900.000	0.053	0.008	-154.069	8.723	-61.270	0.215	-1
18000.000	0.052	0.008	-168.760	8.856	-61.289	0.240	-1

Figure 4: Data Explorer / Table

following user controls are available:

Conv sets the conversion to None, S/S', Impedance, Admittance, VSWR or Time Domain (default: None).

Format sets the data format to Real Imag or Mag Phase (default: Mag Phase).

Mag format sets the magnitude format to Mag lin (reflection and transmission linear), Mag log (reflection and transmission logarithmic) or Mag lin log (reflection linear and transmission logarithmic) (default: Mag lin).

Phase format sets the phase format to Phase 180, Phase 360, Phase Unwrap, Phase Delay or Group Delay (default: Phase 180).

Unc sets the uncertainty mode to None, Standard or U95 (default: None).

Freq sets the frequency format to Hz, kHz, MHz or GHz (default: MHz).

Numeric Format sets the numeric format (default: f3).

Save Data saves the current data in a file. Supported file formats are S-Parameter Data (*.sdatb or *.sdatx), Touchstone (*.s1p, *.s2p, *.s*p), VNA Data (*.vdatb or *.vdatx) or CITI (*.cti or *.citi).

Save Table saves the current formatted data in a file. Supported file format is Text (*.txt).

Copy Table copies the current formatted data to the clipboard.

One can select one or more rows of the table and copy the data to the clipboard with CTRL-C or with the context menu of the table. CTRL-A selects all data.

3.3.3 Point

The first of the selected files will be shown in the point view. One can select one frequency point and one parameter and obtains the uncertainty budget of the selected data point, see Figure 5. The following user controls are available:

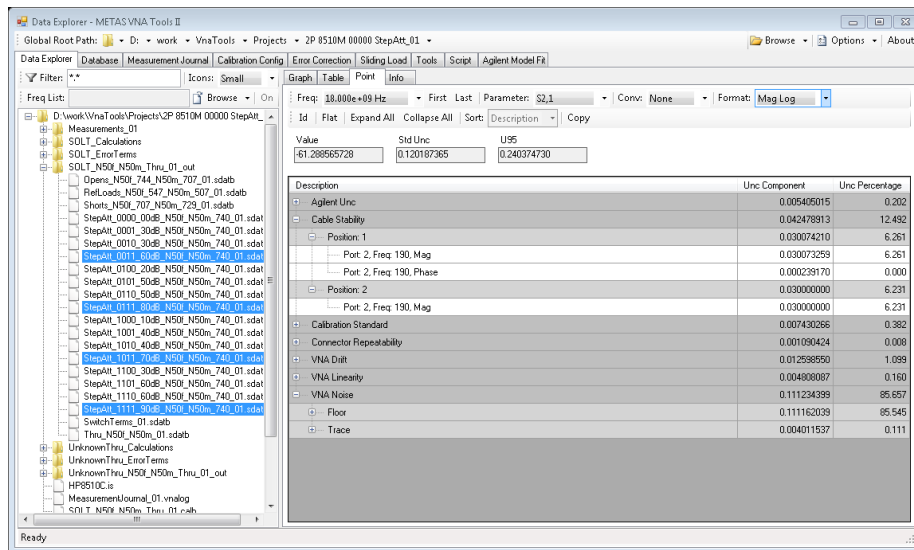


Figure 5: Data Explorer / Point

Freq selects a frequency point for the uncertainty budget (default: None).

Time selects a time point for the uncertainty budget (default: None). Only visible when conversation is set to Time Domain.

First selects the first frequency or time point.

Last selects the last frequency or time point.

Parameter selects a parameter for the uncertainty budget (default: None).

Conv sets the conversion to None, S/S', Impedance, Admittance, VSWR or Time Domain (default: None).

Format sets the format to Real, Imag, Mag, Mag log, Phase, Phase 360, Phase Unwrap, Phase Delay or Group Delay (default: Mag).

Id shows or hides the uncertainty input ids (default: Hide).

Flat shows a flat or tree uncertainty budget (default: Tree).

Expand All expands all tree nodes.

Collapse All collapses all tree nodes.

Sort sets the sort order to Description or Uncertainty (default: Description).

Copy copies the uncertainty budget to the clipboard.

The following items will be shown for the selected data point:

Value indicates the value.

Std Unc shows the standard uncertainty (67% coverage factor, $k = 1$).

U95 shows the expanded uncertainty (95% coverage factor, $k = 2$).

Unc Budget shows a tabular visualization of the uncertainty budget.

3.3.4 Info

The info tab supports multiple selected files. One can obtain information about multiple files by holding the CTRL or SHIFT key and selecting the files. The info tab shows the file name, size, modification date and computes the MD5 checksum for each selected file. See Figure 6.

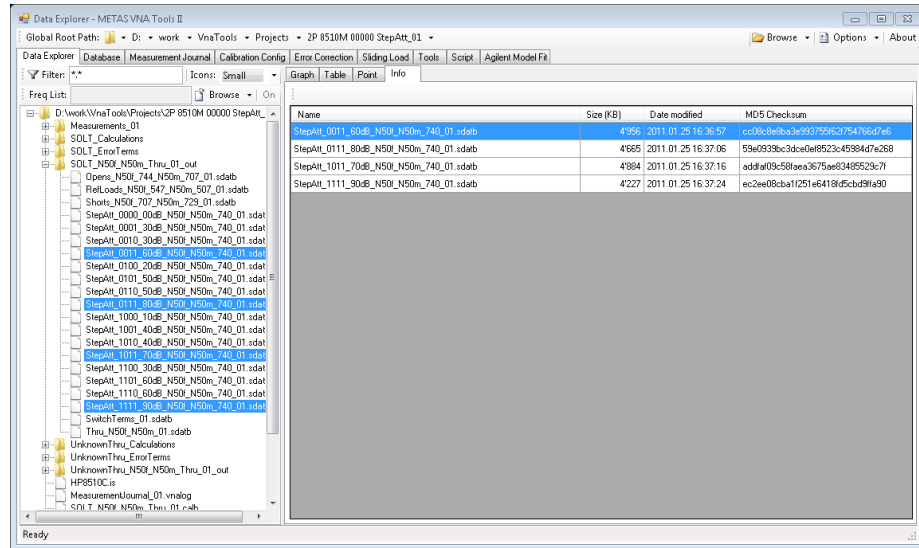


Figure 6: Data Explorer / Info

3.4 Math

The same equations are used in Graph, Table and Point tab for data conversion and formatting. Table 3 shows the equations for data conversions in METAS VNA Data Explorer. Variable x is the input quantity, y is the converted output, Z_r is the reference impedance and Y_r is the reference admittance. Index i is the frequency point, j is the receiver port and k is the source port. Table 4 shows

Table 3: Conversions

Conversion	Equation
None	$y = x$
S/S'	$y_{jk} = x_{jk}/x_{kj}$
Impedance	$y = \frac{1+x}{1-x} Z_r$
Admittance	$y = \frac{1-x}{1+x} Y_r$
VSWR	$y = \frac{1+ x }{1- x }$
Time Domain	$y = \text{ifft}(x)$ with 256 points

the equations used for data formatting. Variable y is the converted input from Table 3 and z is the formatted output.

Table 4: Formats

Format	Equation
Real	$z = \Re(y)$
Imag	$z = \Im(y)$
Mag	$z = y $
Mag log	$z = 20 \log_{10}(y)$
Phase	$z = \arg(y)$
Phase 360	$z = \arg(y)$
Phase Unwrap	$z = \text{unwrap}(\arg(y))$
Phase Delay	$z_i = -\frac{\varphi_i}{2\pi f_i}$ with $\varphi = \text{unwrap}(\arg(y))$
Group Delay	$z_i = -\frac{\varphi_i - \varphi_{i-1}}{2\pi(f_i - f_{i-1})}$ with $\varphi = \text{unwrap}(\arg(y))$

3.5 Uncertainty

There are three different uncertainty modes:

None hides the uncertainty.

Standard shows the standard uncertainty (67% coverage factor, $k = 1$).

U95 shows the expanded uncertainty (95% coverage factor, $k = 2$).

The uncertainties are computed with linear uncertainty propagation. This leads to well known problems when computing the absolute value and phase of small quantities.

4 Database

The Database is designed to specify values and uncertainties of cables, calibration standards, connectors and VNA devices.

4.1 Cable

The tabular page, called Cable, is designed to specify cables in the database, see Figure 7. The following user controls are available:

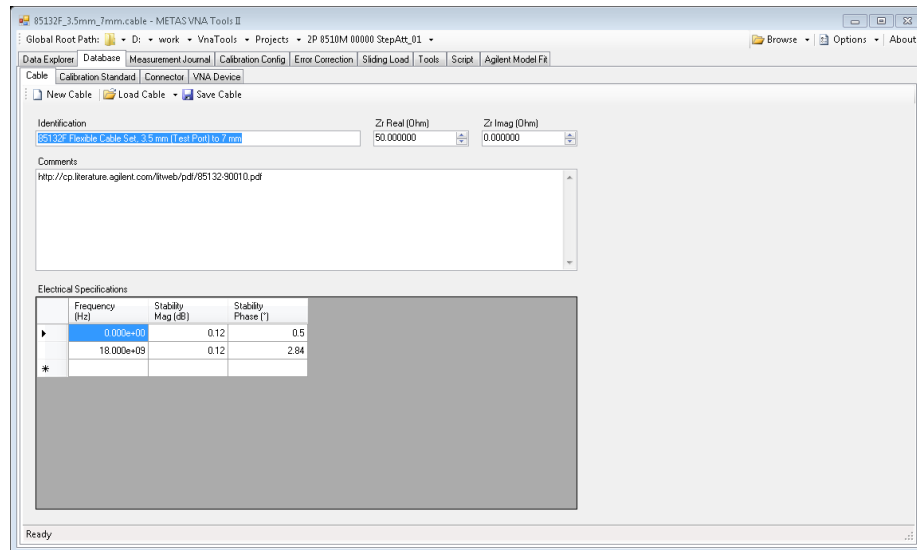


Figure 7: Database / Cable

New Cable creates a new database item of the type cable.

Load Cable loads a cable from a file (*.cable).

Save Cable saves the cable to a file (*.cable).

Identification field can contain an identification string.

Zr Real (Ohm) specifies the real part of the reference impedance in Ohm.

Zr Imag (Ohm) specifies the imaginary part of the reference impedance in Ohm.

Comments field can contain user comments.

Electrical Specifications is a table with the following columns:

- Frequency in Hz

- Stability Mag (dB) with $k = 2$
- Stability Phase (deg) with $k = 2$

4.2 Calibration Standard

The tabular page, called Calibration Standard, is designed to specify calibration standards in the database, see Figure 8. The following user controls are

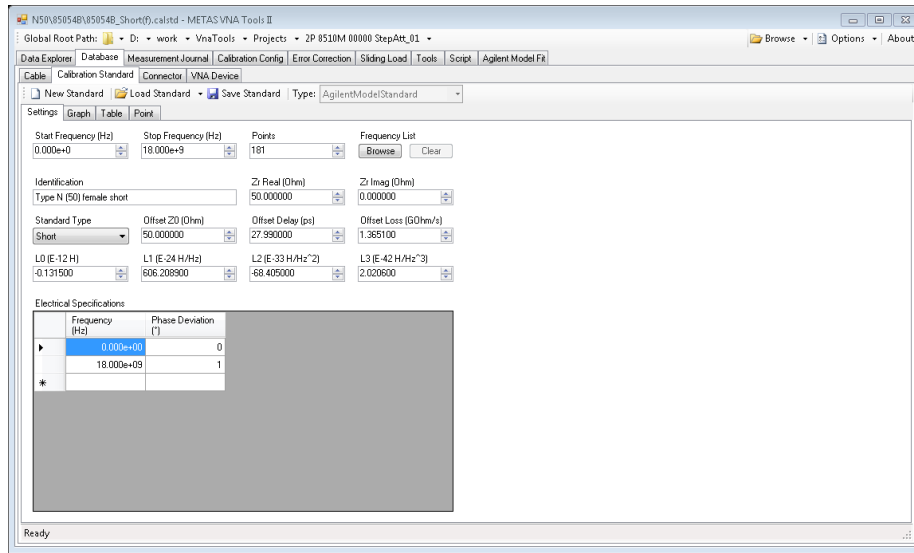


Figure 8: Database / Calibration Standard

available:

New Standard creates a new database item of the type calibration standard.

Load Standard loads a calibration standard from a file (*.calstd).

Save Standard saves the calibration standard to a file (*.calstd).

Start Frequency (Hz) specifies the start frequency.

Stop Frequency (Hz) specifies the stop frequency.

Points sets the number of data points.

Frequency List Browse loads a frequency list.

Frequency List Clear clears the frequency list.

Identification field can contain an identification string.

Zr Real (Ohm) specifies the real part of the reference impedance in Ohm.

Zr Imag (Ohm) specifies the imaginary part of the reference impedance in Ohm.

4.2.1 Agilent Model Standard

For a calibration standard of the type Agilent model the following controls are available:

Standard Type specifies the standard type as open, short, load or delay/thru.

Offset Z0 (Ohm) sets the offset line impedance in Ohm.

Offset Delay (ps) sets the offset line delay in ps.

Offset Loss (GOhm/s) set the offset line loss in GOhm/s.

CO (E-15 F) sets the first polynomial coefficient for an open.

C1 (E-27 F/Hz) sets the second polynomial coefficient for an open.

C2 (E-36 F/Hz²) sets the third polynomial coefficient for an open.

C3 (E-45 F/Hz³) sets the fourth polynomial coefficient for an open.

L0 (E-12 H) sets the first polynomial coefficient for a short.

L2 (E-24 H/Hz) sets the second polynomial coefficient for a short.

L2 (E-33 H/Hz²) sets the third polynomial coefficient for a short.

L3 (E-42 H/Hz³) sets the fourth polynomial coefficient for a short.

Electrical Specifications is a table with the following columns for an open or a short:

- Frequency in Hz
- Phase Deviation (deg) with $k = 2$

Phase deviations are as well translated to magnitude uncertainties. The used formalism yields a circular uncertainty region.

For a load or delay/thru the table has the following columns:

- Frequency in Hz
- Return Loss (dB) with $k = 2$

E.g. an uncertainty of the Return Loss of -40 dB is translated to an uncertainty of 0.01 of real and imaginary part of the reflection coefficient.

4.2.2 Databased Standard

Databased standards define the value and uncertainty budget of each frequency point and parameter. This format works without loss of accuracy. Thus it is ideal for transferring measurement data and uncertainties from National Metrology Institutes to customers. For a databased standard the following control is available:

Data Path specifies the path (*.sdatb) for the file which contains the S-parameters of the standard.

4.3 Connector

The Connector tabular page is designed to specify connectors in the database, see Figure 9. The following user controls are available:

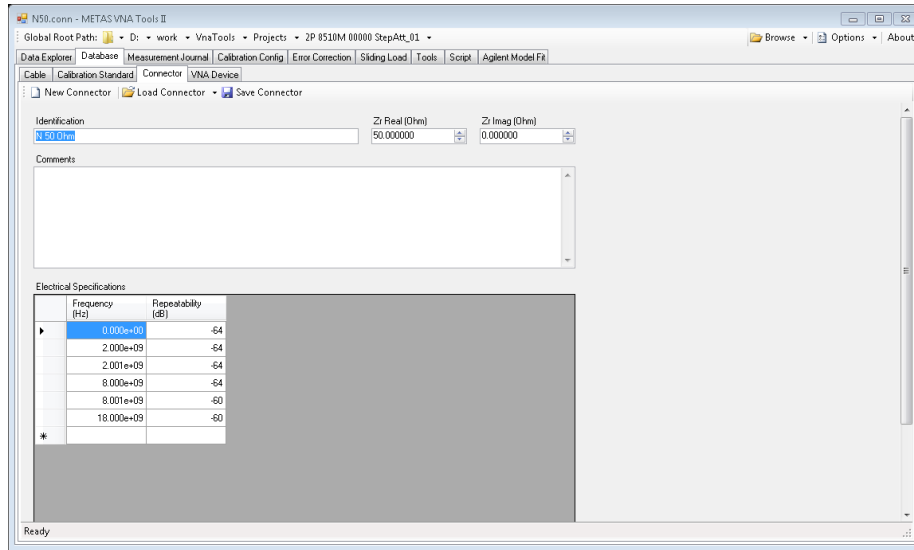


Figure 9: Database / Connector

New Connector creates a new database item of the type connector.

Load Connector loads a connector from a file (*.conn).

Save Connector saves the connector to a file (*.conn).

Identification field can contain an identification string.

Zr Real (Ohm) specifies the real part of the reference impedance in Ohm.

Zr Imag (Ohm) specifies the imaginary part of the reference impedance in Ohm.

Comments field can contain user comments.

Electrical Specifications is a table with the following columns:

- Frequency in Hz
- Repeatability (dB) with $k = 2$

4.4 VNA Device

The VNA Device tabular page is designed to specify VNA devices in the database, see Figure 10. The following user controls are available:

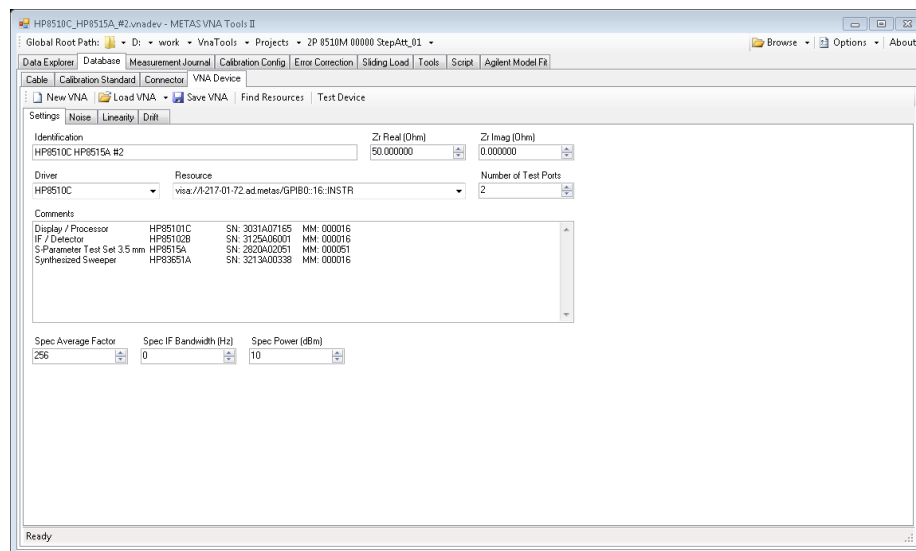


Figure 10: Database / VNA Device / Settings

New VNA creates a new database item of the type VNA device.

Load VNA loads a VNA item from a file (*.vnadev).

Save VNA saves the VNA item to a file (*.vnadev).

Find Resources finds VISA resources. VISA resources are the addresses of devices connected to the computer. VISA is a standard which is accepted by nearly all manufactures of VNAs.

Test Device tests VNA device if VISA connection is possible.

The following user controls are available on the sub tabular page called Settings:

Identification field can contain an identification string.

Zr Real (Ohm) specifies the real part of the reference impedance in Ohm.

Zr Imag (Ohm) specifies the imaginary part of the reference impedance in Ohm.

Driver sets the driver for the communication with the VNA device.

Resource sets the VISA resource name of the VNA device.

Number of Test Ports specifies the number of test ports.

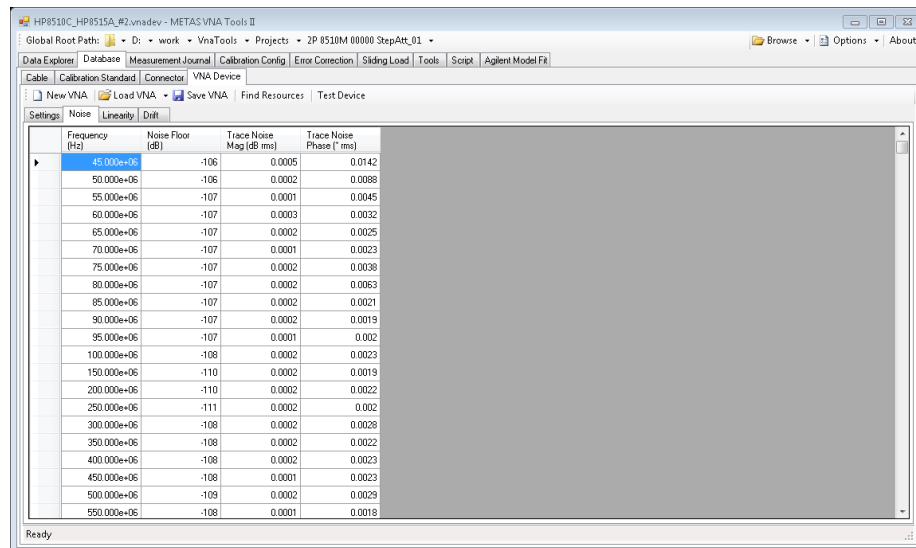
Comments field can contain user comments.

Spec Average Factor specifies the average factor used for the noise specification.

Spec IF Bandwidth (Hz) specifies the IF bandwidth used for the noise specification.

Spec Power (dBm) specifies the power level used for the noise floor and linearity specification.

The next sub tabular page is called Noise, see Figure 11. It contains a table with the following columns:



Frequency (Hz)	Noise Floor (dB)	Trace Noise Mag (dB rms)	Trace Noise Phase (° rms)
45.000e+06	-106	0.0005	0.0142
50.000e+06	-106	0.0002	0.0088
55.000e+06	-107	0.0001	0.0045
60.000e+06	-107	0.0003	0.0032
65.000e+06	-107	0.0002	0.0025
70.000e+06	-107	0.0001	0.0023
75.000e+06	-107	0.0002	0.0038
80.000e+06	-107	0.0002	0.0063
85.000e+06	-107	0.0002	0.0021
90.000e+06	-107	0.0002	0.0019
95.000e+06	-107	0.0001	0.0002
100.000e+06	-108	0.0002	0.0023
150.000e+06	-110	0.0002	0.0019
200.000e+06	-110	0.0002	0.0022
250.000e+06	-111	0.0002	0.0002
300.000e+06	-108	0.0002	0.0028
350.000e+06	-108	0.0002	0.0022
400.000e+06	-108	0.0002	0.0023
450.000e+06	-108	0.0001	0.0023
500.000e+06	-109	0.0002	0.0029
550.000e+06	-108	0.0001	0.0018

Figure 11: Database / VNA Device / Noise

- Frequency (Hz)
- Noise Floor (dB) with $k = 2$

- Trace Noise Mag (db rms) with $k = 1$
- Trace Noise Floor (deg rms) with $k = 1$

The next sub tabular page contains two tables and is called Linearity, see Figure 12. The first specifies the different power levels in dB. The second table contains the following columns:

Power Levels (dB)	Frequency (Hz)	Linearity @ -320 dB Mag (dB)	Linearity @ -320 dB Phase (°)	Linearity @ -100 dB Mag (dB)	Linearity @ -100 dB Phase (°)	Linearity @ 0 dB Mag (dB)	Linearity @ 0 dB Phase (°)	Linearity @ 20 dB Mag (dB)	Linearity @ 20 dB Phase (°)
-320	45.000e+09	0.01	0.05	0.01	0.05	0.01	0.05	0.01	0.05
-100	26.500e+09	0.01	0.05	0.01	0.05	0.01	0.05	0.01	0.05
0									
20									

Figure 12: Database / VNA Device / Linearity

- Frequency (Hz)
- Linearity Mag (dB) with $k = 2$, one column for each power level
- Linearity Phase (deg) with $k = 2$, one column for each power level

The next sub tabular page is called Drift, see Figure 13. It contains a table with the following columns:

- Frequency (Hz)
- Switch Term Drift (dB) with $k = 2$
- Directivity Drift (db) with $k = 2$
- Tracking Drift Mag (dB) with $k = 2$
- Tracking Drift Phase (deg) with $k = 2$
- Match Drift (dB) with $k = 2$
- Isolation Drift (dB) with $k = 2$

HP8510C_VNA Tools II

Global Root Path: D:\work\VnaTools\Projects\2P_8510M_00000_StepAtt_01

Data Explorer Database Measurement Journal Calibration Config Error Correction Sliding Load Tools Script Agilent Model Fit

Cable Calibration Standard Connector VNA Device

New VNA Load VNA Save VNA Find Resources Test Device

Settings Noise Linearity Drift

Frequency (Hz)	Switch Term Drift (dB)	Directivity Drift (dB)	Tracking Drift Mag (dB)	Tracking Drift Phase (°)	Match Drift (dB)	Isolation (dB)
45.000e+03	-70	-70	0.01	0.06	-70	-120
50.000e+06	-70	-70	0.01	0.06	-70	-120
50.001e+06	-70	-70	0.015	0.09	-70	-120
20.000e+09	-70	-70	0.015	0.09	-70	-120
20.001e+09	-60	-60	0.02	0.12	-60	-120
26.500e+09	-60	-60	0.02	0.12	-60	-120
*						

Ready

Figure 13: Database / VNA Device / Drift

5 Measurement Journal

The tabular page, called Measurement Journal, is designed to collect measurement data and to protocol the measurement process, see Figure 14. The follow-

The screenshot shows the 'Measurement Journal' window in the METAS VNA Tools II application. The window title is 'MeasurementJournal_01.vnalog - METAS VNA Tools II'. The menu bar includes 'Data Explorer', 'Database', 'Measurement Journal', 'Calibration Config', 'Error Correction', 'Sliding Load', 'Tools', 'Script', and 'Agilent Model File'. The toolbar contains buttons for 'New Journal', 'Load Journal', 'Save Journal', and a dropdown menu for 'Add VNA Settings' with sub-options: 'Add Cable Movement', 'Add New Connection', 'Add Measurement', 'Add User Comment', 'View Item', and 'Delete Item'. The main area is a table with columns 'Time Stamp', 'Type', and 'Info'. The table contains the following entries:

Time Stamp	Type	Info
2010.11.16 16:49:17	VNA Settings	VNA Device: HP8510C_HP8515A_#2 Sweep Mode: Segment Sweep, Sweep Time: 100.000e-03 s, Dwell Time: 0.000e+00 s, IF Average Factor: 2048 Start Freq: 45.000e+06 Hz, Stop Freq: 95.000e+06 Hz, Step Freq: 5.000e+06 Hz, IF Bandwidth: 0.000e+00 Hz Start Freq: 100.000e+06 Hz, Stop Freq: 18.000e+09 Hz, Step Freq: 100.000e+06 Hz, IF Bandwidth: 0.000e+00 Hz System Z0: 50.000e+00 Ohm Source 1 Power: 10.000 dBm, Source 1 Slope: 0.000 dB/GHz Source 2 Power: 10.000 dBm, Source 2 Slope: 0.000 dB/GHz Port 1 Attenuator: 0 dB, Port 1 Extension: 0.000e+00 s Port 2 Attenuator: 0 dB, Port 2 Extension: 0.000e+00 s
2010.11.16 16:49:54	Cable Movement	Cable: 85132F_3.5mm_7mm, Port: 1, Position: 0
2010.11.16 16:50:05	Cable Movement	Cable: 85132F_3.5mm_7mm, Port: 2, Position: 0
2010.11.16 16:57:33	New Connection	Connector: N500hm, Port: 1
2010.11.16 16:57:38	New Connection	Connector: N500hm, Port: 2
2010.11.16 16:57:55	Measurement	VNA Device: HP8510C_HP8515A_#2 Measurement Path: Measurements_01\Opens_N50f_744_N50m_707_01.sdatb
2010.11.16 17:08:18	New Connection	Connector: N500hm, Port: 1
2010.11.16 17:08:20	New Connection	Connector: N500hm, Port: 2
2010.11.16 17:08:45	Measurement	VNA Device: HP8510C_HP8515A_#2 Measurement Path: Measurements_01\Shorts_N50f_707_N50m_729_01.sdatb
2010.11.16 17:19:52	New Connection	Connector: N500hm, Port: 1
2010.11.16 17:19:57	New Connection	Connector: N500hm, Port: 2
2010.11.16 17:20:02	Measurement	VNA Device: HP8510C_HP8515A_#2 Measurement Path: Measurements_01\RefLoads_N50f_547_N50m_507_01.sdatb
2010.11.16 17:29:11	Cable Movement	Cable: 85132F_3.5mm_7mm, Port: 2, Position: 1
2010.11.16 17:29:20	New Connection	Connector: N500hm, Port: 1

Figure 14: Measurement Journal

ing user controls are available:

VNA Device selects a VNA device.

Open opens the VISA connection to the VNA device.

Close closes the VISA connection to the VNA device.

New Journal creates a new measurement journal.

Load Journal loads an existing measurement journal from a file (*.vnalog).

Save Journal saves the measurement journal to a file (*.vnalog).

Auto Save enables or disables auto save of the measurement journal.

Add VNA Settings adds a journal item for VNA settings to the measurement journal.

Add Cable Movement adds a journal item for cable movement to the measurement journal.

Add Custom Cable Settings specifies a cable for the current journal which is not in the database.

Add New Connection adds a journal item for a new connection to the measurement journal.

Add Custom Connector Settings specifies a connector for the current journal which is not in the database.

Add Measurement adds a measurement.

Add Begin Experiment defines the start of an experiment.

Add End Experiment defines the end of an experiment.

Add User Comment adds a user comment to the measurement journal.

View Item shows the selected item of the journal.

Delete Item deletes the selected items of the journal.

There are more user controls available which allow some short cuts in a single step, e.g. Add Cable Movement Port 2, New Connection Port 1 + 2 and Add Measurement Sx,x.

5.1 VNA Settings

The dialog, called VNA Settings, is designed to set up the VNA, see Figure 15. The following user controls are available:

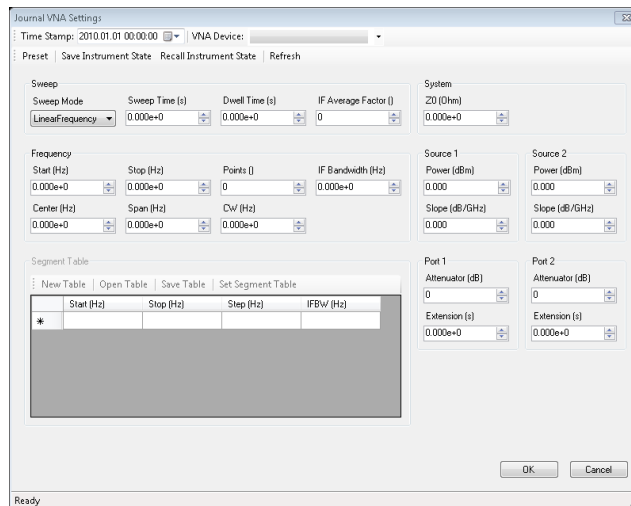


Figure 15: Measurement Journal / VNA Settings

Time Stamp specifies the time stamp for the journal item.

VNA Device specifies the VNA device.

Preset presets the VNA.

Saves Instrument State saves the instrument state from the VNA to a file (*.is).

Recall instrument State recalls the instrument state from a file (*.is) to the VNA.

Refresh refresh all settings from the VNA.

Sweep Mode sets the sweep mode to linear frequency, log frequency, segment sweep or CW time.

Sweep Time (s) sets the sweep time in s.

Dwell Time (s) sets the dwell time in s.

IF Average Factor sets the average factor.

Start Frequency (Hz) sets the start frequency in Hz.

Stop Frequency (Hz) sets the stop frequency in Hz.

Points sets the number of sweep points.

IF Bandwidth (Hz) sets the IF bandwidth in Hz.

Center Frequency (Hz) sets the center frequency in Hz.

Frequency Span (Hz) sets the frequency span in Hz.

CW Frequency (Hz) sets the frequency for CW sweep mode in Hz.

New Table creates a new segment table.

Open Table loads a segment table from a file (*.txt).

Save Table saves the segment table to a file (*.txt).

Set Segment Table sets the segment table to the VNA.

Segment Table is a table with the following columns:

- Start Frequency in Hz
- Stop Frequency in Hz
- Step Size in Hz
- IF Bandwidth in Hz

System Z0 (Ohm) specifies the reference impedance in Ohm.

Source 1 Power (dBm) sets the power level of the first source in dBm.

Source 1 Slope (dB/GHz) sets the power slope of the first source in dB/GHz.

Source 2 Power (dBm) sets the power level of the second source in dBm.

Source 2 slope (dB/GHz) sets the power slope of the second source in dB/GHz.

Port 1 Attenuator (dB) sets the attenuation of the first port in dB.

Port 1 Extension (s) shifts the reference plane of port 1 by a definable delay in s.

Port 2 Attenuator (dB) sets the attenuation of the second port in dB.

Port 2 Extension (s) shifts the reference plane of port 2 by a definable delay in s.

5.2 Cable Movement

The dialog, called Cable Movement, is designed to describe a cable movement for the journal, see Figure 16. The following user controls are available:

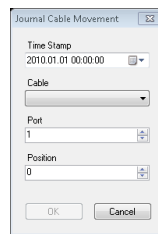


Figure 16: Measurement Journal / Cable Movement

Time Stamp specifies the time stamp of the journal item.

Cable selects a cable from the database.

Port specifies at which port the cable was moved.

Position specifies the position of the cable. Thus each cable movement requires an increase of the position number. With each change of the position number the cable uncertainties, specified in the database, are added to the measurement data.

5.3 Custom Cable Settings

The dialog, called Custom Cable Settings, is designed to describe cables which are not in the database for the current journal. One can specify the magnitude and phase stability of such a cable in this dialog, see Figure 17. The following user controls are available:

Time Stamp specifies the time stamp of the journal item.

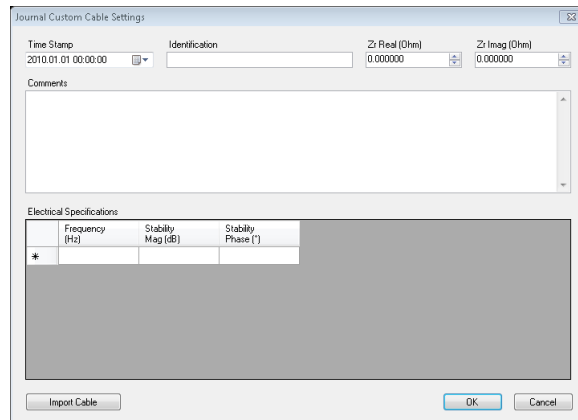


Figure 17: Measurement Journal / Custom Cable Settings

Identification field contains identification string.

Zr Real (Ohm) specifies the real part of the reference impedance in Ohm.

Zr Imag (Ohm) specifies the imaginary part of the reference impedance in Ohm.

Comments field can contain user comments.

Electrical Specifications is a table with the following columns:

- Frequency in Hz
- Stability Mag (dB) with $k = 2$
- Stability Phase (deg) with $k = 2$

Import Cable imports a cable from the database.

5.4 New Connection

The dialog, called New Connection, is designed to describe a new connection in the journal, see Figure 18. The following user controls are available:

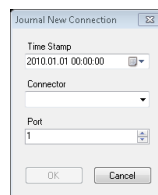


Figure 18: Measurement Journal / New Connection

Time Stamp specifies the time stamp of the journal item.

Connector selects a connector from the database.

Port specifies at which port the new connection was made.

5.5 Custom Connector Settings

The dialog, called Custom Connector Settings, is designed to describe a connector which is not in the database for the current journal. One can specify the repeatability of such a connector in this dialog, see Figure 19. The following

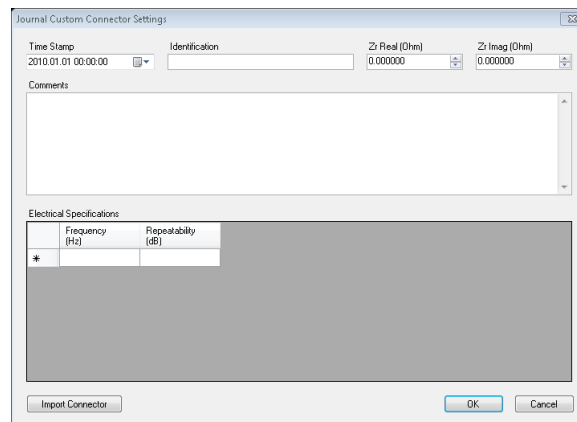


Figure 19: Measurement Journal / Custom Connector Settings

user controls are available:

Time Stamp specifies the time stamp of the journal item.

Identification field can contain an identification string.

Zr Real (Ohm) specifies the real part of the reference impedance in Ohm.

Zr Imag (Ohm) specifies the imaginary part of the reference impedance in Ohm.

Comments field can contain user comments.

Electrical Specifications is a table with the following columns:

- Frequency in Hz
- Repeatability (dB) with $k = 2$

Import Connector imports a connector from the database.

5.6 Measurement

The Measurement dialog is designed to collect measurement data from the VNA, see Figure 20. The following user controls are available:

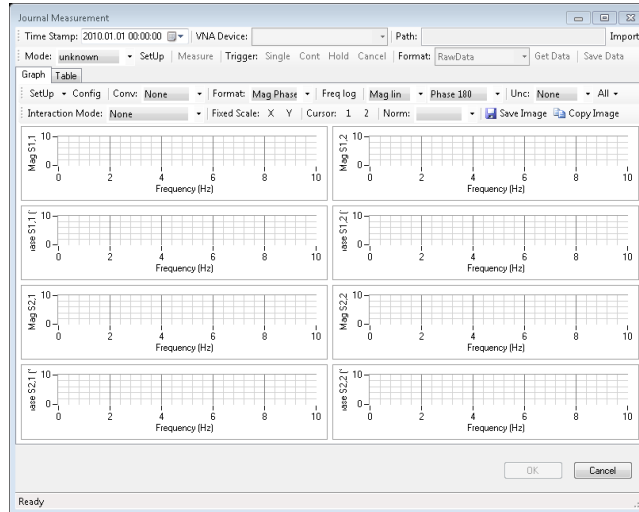


Figure 20: Measurement Journal / Measurement

Time Stamp specifies the time stamp of the journal item.

VNA Device specifies the VNA device.

Path field contains the path of the measurement data.

Import imports an existing file instead of making a new VNA measurement.
Only available if VNA connection is closed.

Mode selects a setup mode for the VNA, e.g. S1,1.

SetUp sets up the VNA to the selected mode.

Measure performs a single sweep on the VNA, wait until the sweep is complete and reads out the data.

Trigger Single performs a single sweep on the VNA and waits until the sweep is complete.

Trigger Cont sets the trigger of the VNA to continuous mode.

Trigger Hold sets the trigger of the VNA to hold mode.

Trigger Cancel cancels the current sweep.

Format sets the format to Raw Data or Error Corrected Data (default: Raw Data).

Get Data reads out the data from the VNA.

Save Data saves the data to an S-parameter file (*.sdatb).

5.7 Experiment

The Experiment dialog is designed to describe an experiment, see Figure 21. Experiments are necessary for DUTs with bad repeatability. The journal items of the type experiment will cause VNA Tools II to determine the repeatability of the measurement from repeated measurements. If no journal items of the type experiment are used, the repeatability uncertainties from the database will be used. The following user controls are available:

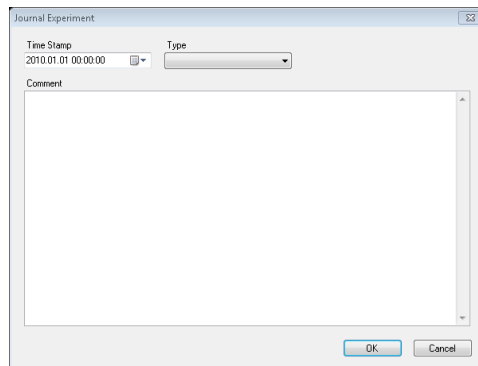


Figure 21: Measurement Journal / Experiment

Time Stamp specifies the time stamp of the journal item.

Type sets the type of the experiment to Statistical or Systematic (default: Systematic). Statistical assumes a mono modal distribution for the resulting uncertainties. Systematic assumes a multi modal distribution.

Comments field can contain user comments.

5.8 User Comment

The dialog, called User Comment, is designed to add user comments to the journal, see Figure 22. The following user controls are available:

Time Stamp specifies the time stamp of the journal item.

Comments field can contain user comments.

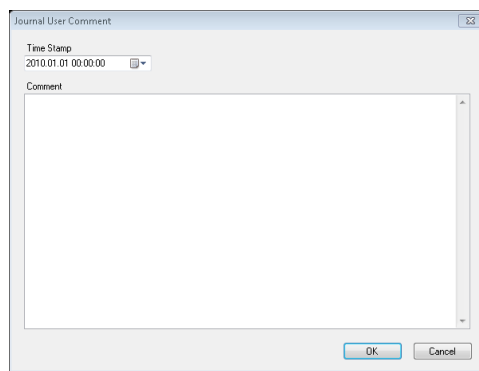


Figure 22: Measurement Journal / User Comment

6 Calibration Config

The tabular page, called Calibration Config, is designed to configure a VNA calibration, see Figure 23. The result will be the switch and error terms of the VNA. There are two models of the VNA:

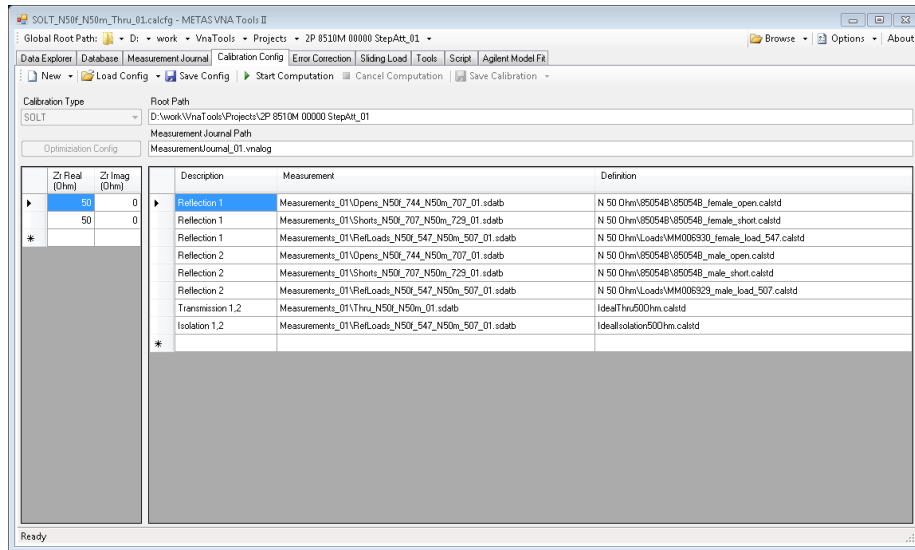


Figure 23: Calibration Config

Generic Model stores the switch terms in a N -port and the error terms are stored in a $2N$ -port for a N -port VNA. For a two port VNA, this calibration model is known as 7-term model.

Switched Model stores the error terms in a $2N$ -port for each switch position for a N -port VNA. For a two port VNA, this calibration model is known as 12-term model.

The following calibration types are supported:

- One Port (generic model)
- SOLT (switched model)
- GSOLT (generic model)
- QSOLT (generic model)
- Unknown Thru (generic model)
- TRL (generic model, only 2-port)
- Optimization (generic model, not in external version)

The following user controls are available:

New creates a new calibration configuration.

New from Template loads a configuration template.

Load Config loads an existing configuration from a file (*.calcfg).

Save Config saves the configuration to a file (*.calcfg).

Start Computation computes the VNA calibration.

Cancel Computation cancels the computation.

Save Calibration saves the VNA calibration to a file (*.calb).

Save Error Terms saves the error terms to a file (*.sdatb). Only available in the generic model.

Save Switch Terms saves the switch terms to a file (*.sdatb). Only available in the generic model.

Save Switched Error Terms saves the error terms for each switch position to a file (*.sdatb).

Optimization Config edits the optimization parameters (not in external version).

Root Path sets the root path for the calibration configuration .

Measurement Journal Path sets the path (*.vnalog) for the measurement journal. All measurements used for the calibration have to be in the measurement journal.

Zr (Ohm) specifies the complex reference impedance for each test port.

Description specifies the type of calibration standard and the ports which were measured.

Measurement specifies the path (*.sdatb) where the data of the measured standard is. Only the configuration (*.slcfg) is given for the sliding load. It is possible to specify an N -port file for 1-port standards. In such a case the number in the description field defines which part of the data is used. E.g. only S1,1 of a 2-port file is used in a line where the description field is set to Reflection 1.

Definition specifies the path (*.calstd) which contains the definition of the standard. Leave this cell empty for a switch term row.

6.1 Optimization Parameters

The dialog, called Optimization Calibration Config, is designed to configure the optimization parameters, see Figure 24. The following user controls are

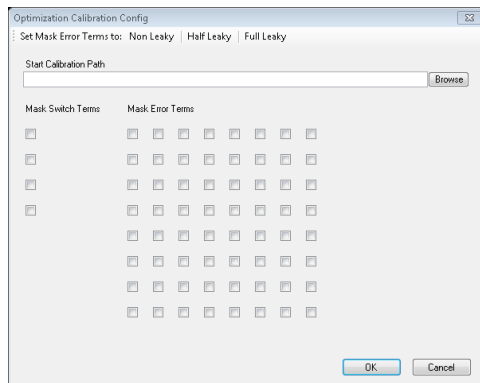


Figure 24: Optimization Calibration Config

available:

Set Mask Error Terms sets the mask of the error terms for a non-, half- or full-leaky model of the VNA.

Start Calibration Path specifies the start values used for the optimization (*.calb).

Mask Switch Terms selects the switch terms which will be optimized.

Mask Error Terms selects the error terms which will be optimized. This mask represents a $2N \times 2N$ S-parameter matrix for a VNA with N ports. In the upper left part of the matrix are the directivity and isolation terms. The match terms are in the lower right of the diagonal. The other check boxes represent tracking terms.

7 Error Correction

The tabular page, called Error Correction, is designed to configure the error correction of the raw measurement data, see Figure 25. The following user

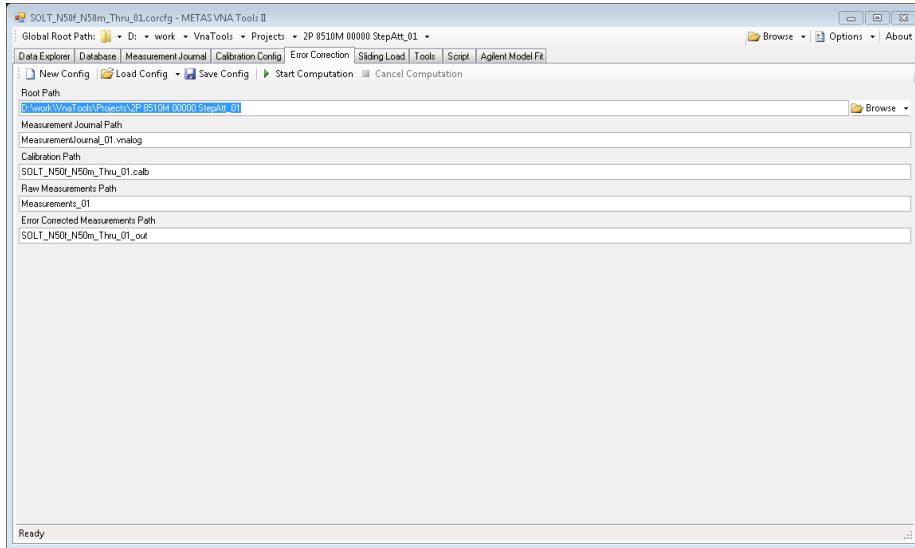


Figure 25: Error Correction

controls are available:

New creates a new configuration for error correction.

Load Config loads an existing configuration from a file (*.corcfg).

Save Config saves the configuration to a file (*.corcfg).

Start Computation computes the error correction.

Cancel Computation cancels the computation.

Root Path sets the root path for the configuration of the error correction.

Measurement Journal Path sets the path (*.vnslog) for the measurement journal. All raw measurements have to be in the measurement journal.

Calibration Path sets the calibration path (*.calb).

Raw Measurement Path sets the directory which contains the raw measurements.

Error Corrected Measurement Path sets the path where the corrected data will be stored. All files from the Raw Measurement Path and all subdirectories will be error-corrected and stored in this directory.

8 Sliding Load

The tabular, page called Sliding Load, is designed to configure and compute the circle fit of a sliding load. It merges the circle fit with the measurement of a low-band load at the specified frequency point, see Figure 26. The following

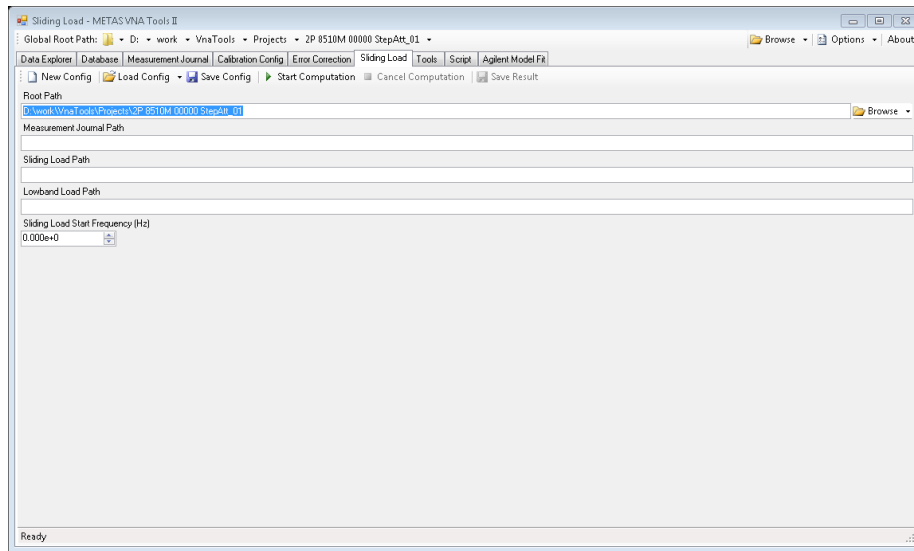


Figure 26: Sliding Load

user controls are available:

New creates a new configuration for a sliding load.

Load Config loads an existing configuration from a file (*.slcfg).

Save Config saves the configuration to a file (*.slcfg).

Start Computation computes the circle fit for the sliding load.

Cancel Computation cancels the computation.

Save Result saves the result to a file (*.sdatb).

Root Path sets the root path for the configuration.

Measurement Journal Path sets the path (*.vna-log) for the measurement journal. The files of the sliding load and the low-band load have to be in the measurement journal.

Sliding Load Path sets the directory where the raw measurements of the sliding load are.

Lowband Load Path sets the path (*.sdatb) where the file of the raw measurement of the low-band load is.

Sliding Load Start Frequency (Hz) sets the start frequency of the sliding load in Hz. Below this frequency the measurement data of the low band load is used.

9 Tools

The tabular page, called Tools, provides some tools for post processing of data, see Figure 27. During post processing the uncertainties are propagated to the end results.

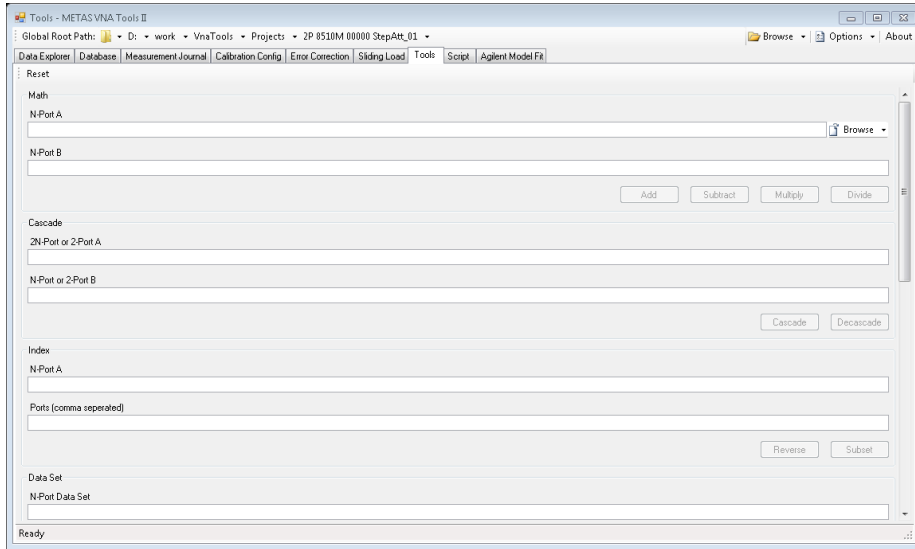


Figure 27: Tools

9.1 Math

The following math tools are available:

Add adds N -port A and N -port B.

Subtract subtracts N -port B from N -port A.

Multiply multiplies N -port A with N -port B.

Divide divides N -port A by N -port B.

9.2 Cascade

The following cascade tools are available:

Cascade cascades $2N$ -port A with N -port B or cascades 2-port A with 2-port B.

Decascade decascades $2N$ -port A from N -port B or decascades 2-port A from 2-port B.

9.3 Index

The following index tools are available:

Reverse reverses the port assignment of an S-parameter file (*.sdatb).

Subset takes a subset of the ports of an S-parameter file (*.sdatb).

9.4 Data Set

The following data set tools are available:

Mean computes the mean of a data set.

Circle Fit computes the circle fit of a data set.

9.5 Merge

The merge tool merges two S-parameter files (*.sdatb) at a given frequency point.

9.6 Change Zr

The change Zr tool changes the reference impedance to a specified complex value in Ohm of an S-parameter data file (*.sdatb).

9.7 Interpolation

The interpolation tool interpolates a given S-parameter file (*.sdatb) to a frequency list which is specified by a file (*.fl).

9.8 Agilent Uncertainty Calculator

The Agilent uncertainty calculator computes uncertainties for S-parameter files (*.sdatb) using the Agilent Vector Network Analyzer Uncertainty Calculator, see http://www.agilent.com/find/na_calculator. Note that this option works only with 32 bit systems.

10 Script

The tabular page, called Script, provides a built-in Iron Python script engine, see Figure 28. The following user controls are available:

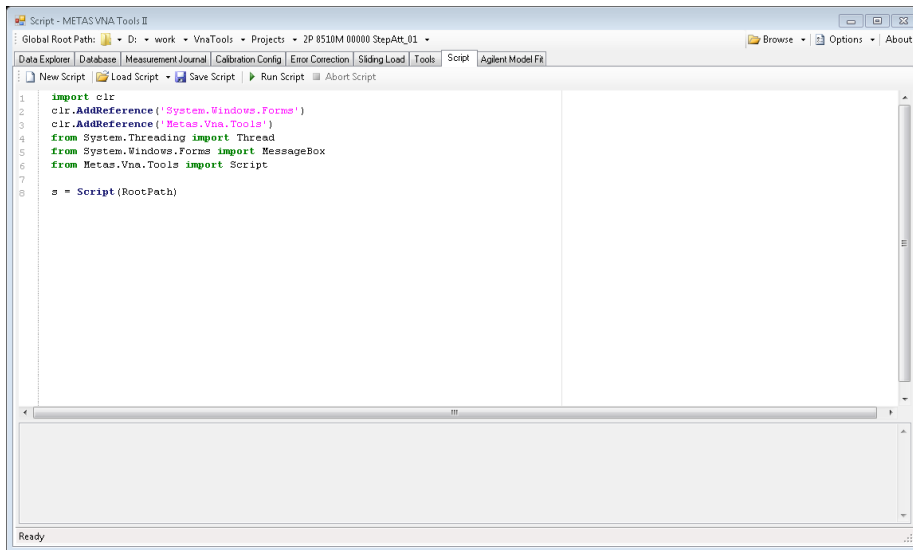


Figure 28: Script

New Script creates a new script.

Load Script loads an existing script from a file (*.py).

Save Script saves the script to a file (*.py).

Run Script executes the script.

Abort Script aborts the execution of the script.

Input field shows the script.

Output field shows the output of the script.

11 Agilent Model Fit

The tabular page, called Agilent Model Fit, computes the parameters of a calibration standard for an Agilent model, see Figure 29. The following user controls

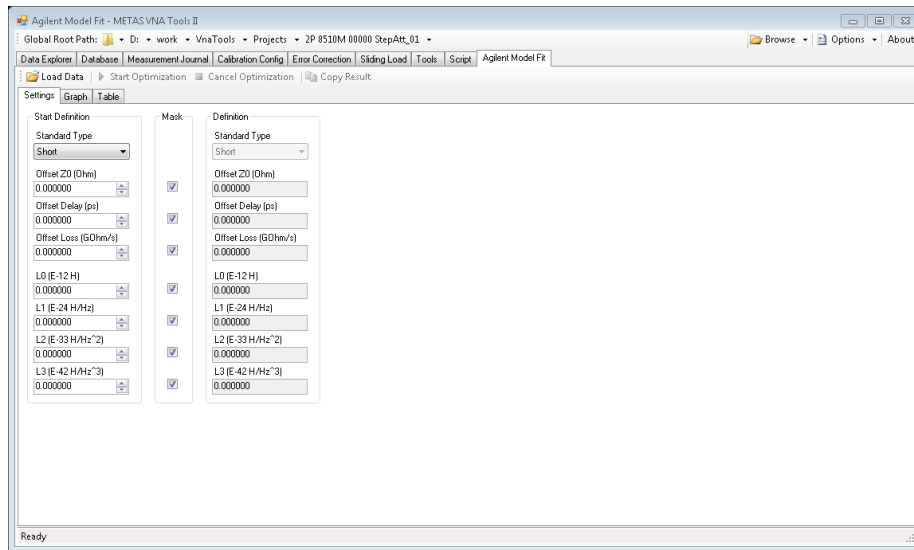


Figure 29: Agilent Model Fit

are available:

Load Data loads S-parameter file (*.sdatb).

Start Optimization starts optimization of the selected parameters.

Cancel Optimization aborts optimization.

Copy Result copies the result to the clipboard.

Start Definition describes the start values for the optimization.

Mask selects optimization parameters.

Definition shows the result.

A File Types

Table 5 shows the supported file types. S-Parameter Data files can only contain S-parameter data. In contrast VNA Data files can contain receiver values and ratios of receiver values.

Table 5: File types

Description	Extension
S-Parameter Data Binary	(.sdatb)
S-Parameter Data Touchstone	(.*p)
S-Parameter Data Xml	(.sdatx)
VNA Calibration Config	(.calcfg)
VNA Calibration Data Binary	(.calb)
VNA Calibration Data Xml	(.calx)
VNA Data Binary	(.vdatb)
VNA Data CITI	(.cti;.citi)
VNA Data Xml	(.vdatx)
VNA Database Cable	(.cable)
VNA Database Calibration Standard	(.calstd)
VNA Database Connector	(.conn)
VNA Database VNA Device	(.vnadev)
VNA Error Correction Config	(.corcfg)
VNA Measurement Journal	(.vnalog)
VNA Sliding Load Config	(.slcfg)
Frequency List	(.fl)

B Naming Convention

The here described naming convention is meant as a help for the user. It is not required by VNA Tools II. Table 6 shows some examples for names of calibration standards and devices under test. Table 7 shows the naming convention for the

Table 6: DUT types

Description	Name
Open	'Open'
Short (n)	'Short[n ']
Flush Short	'FShort'
Load	'Load'
Sliding Load	'SLoad'
Mismatch	'MMatch'
Power Sensor	'PSensor'
Thru	'Thru'
Line l mm	'Line[l]mm'
Adapter	'Ada'
Matching Pad	'MPad'
Match Thru	'MThru'
Mismatch Thru	'MmThru'
Attenuator a dB	'Att[a]dB'
Step Attenuator a dB, selected state: s , x dB	'StepAtt[a]dB-[s]-[x]dB'
Splitter	'Splitter'
Coupler	'Coupler'

different connector types. Table 8 shows the naming convention for the gender of connectors. Figure 30 shows a typical project example.

Table 7: Connector types

Description	Name
1.0 mm Connector	'1.0mm'
1.85 mm Connector	'1.85mm'
2.4 mm Connector	'2.4mm'
2.92 mm Connector	'2.92mm'
3.5 mm Connector	'3.5mm'
7 mm Connector	'7mm'
Type N 50 Ω Connector	'N50'
Type N 75 Ω Connector	'N75'

Table 8: Gender of connectors

Description	Name
1-Port DUT female	'(f)'
1-Port DUT male	'(m)'
2-Port DUT female male	'(f-m)'
2-Port DUT male female	'(m-f)'
N-Port DUT female male male ...	'(f-m-m-...)'
N-Port DUT genderless	''

```

Example_2.4mm(fm)_01.....project directory
├── Measurements_01.....raw data
│   ├── CalStandards
│   │   ├── SLoad(f)_1567_01
│   │   │   ├── SLoad(f)_1567_01_N1.sdatb
│   │   │   ├── SLoad(f)_1567_01_N2.sdatb
│   │   │   └── ...
│   │   ├── SLoad(m)_1763_01
│   │   │   ├── SLoad(m)_1763_01_N1.sdatb
│   │   │   ├── SLoad(m)_1763_01_N2.sdatb
│   │   │   └── ...
│   │   ├── Load(f)_451_Load(m)_3218_01.sdatb
│   │   ├── Open(f)_975_Open(m)_999_01.sdatb
│   │   ├── Short(f)_747_Short(m)_2887_01.sdatb
│   │   ├── SwitchTerms_01.sdatb
│   │   └── Thru_01.sdatb
│   └── DUTs
│       ├── Ada_2.4mm(f)_1.85mm(m)_123_01.sdatb
│       ├── Att20dB(f-m)_808_01.sdatb
│       └── ...
├── SOLT_01.out.....error correted data
│   ├── CalStandards
│   └── DUTs
│       ├── Ada_2.4mm(f)_1.85mm(m)_123_01.sdatb
│       ├── Att20dB(f-m)_808_01.sdatb
│       └── ...
├── UThru_01.out.....error correted data
│   ├── CalStandards
│   └── DUTs
│       ├── Ada_2.4mm(f)_1.85mm(m)_123_01.sdatb
│       ├── Att20dB(f-m)_808_01.sdatb
│       └── ...
├── Journal_01.vnalog.....measurement journal
├── SlidingLoad_01.slcfg.....sliding load config
├── SlidingLoad_02.slcfg.....sliding load config
├── SOLT_01.calb.....calibration data
├── SOLT_01.calcfg.....calibration config
├── SOLT_01.corcfg.....error correction config
├── UThru_01.calb.....calibration data
├── UThru_01.calcfg.....calibration config
└── UThru_01.corcfg.....error correction config

```

Figure 30: Tree view of a VNA Tools II project example

C Further Reading

Documentations

- VNA Tools II - User Manual
- VNA Tools II - Math Documentation
- Data Explorer - User Manual

Presentations

- VNA Tools II - Overview
- VNA Tools II - S-Parameter Uncertainty Calculation
- VNA Tools II - Data Format
- VNA Tools II - Optimization Calibration
- VNA Tools II - Step Attenuator Measurement
- VNA Tools II - Splitter Measurement

Tutorials and Screencasts

- VNA Tools II - Tutorial: Perform a SOLT Calibration with the Test VNA.

Websites

- www.metas.ch/vnatools
- www.metas.ch/unclib